

YEAR

2013

LINK

TING KOK RD (from DAI KWAI ST to TAI MEI TUK)

COVERAGE (B) STATION

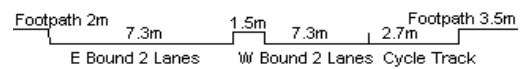
6211

ROAD NETWORK

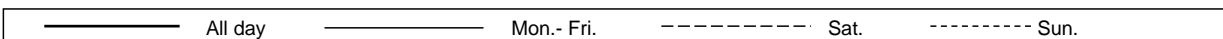
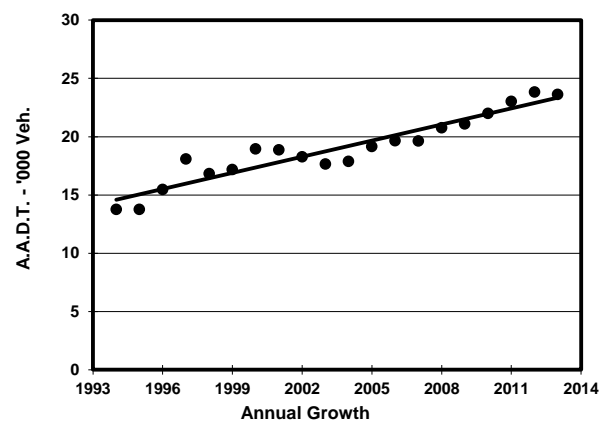
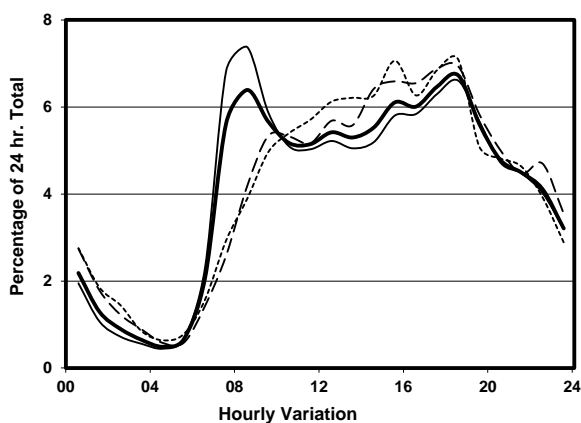
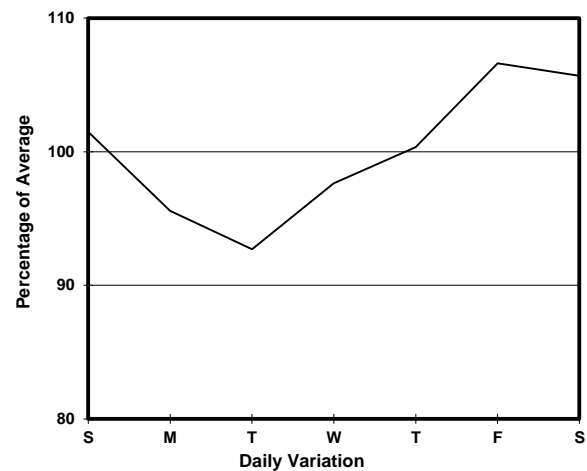
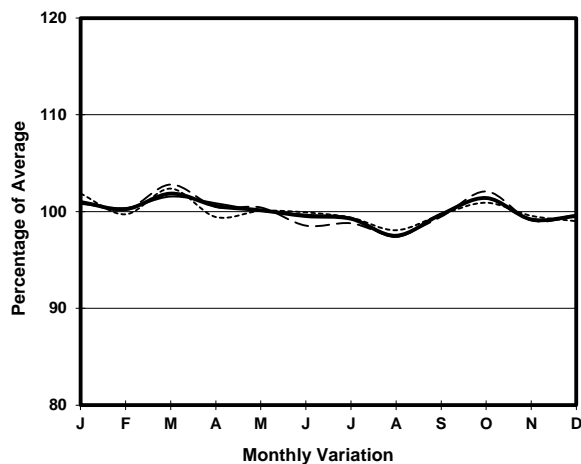
MAJOR

ROAD TYPE

RURAL ROAD



1. TRAFFIC FLOW VARIATION AND GROWTH



2. TRAFFIC CHARACTERISTICS (BY DIRECTION)

Parameter	All - Day	Mon. - Fri.	Sat.	Sun.
EAST BOUND				
A.A.D.T.	11770	11530	12810	11840
R 12 / 24 - %	65.4	65.2	64.6	67
R 16 / 24 - %	88.2	88.8	86.7	87
AM Peak Hour	0800-0900	0800-0900	0900-1000	0900-1000
One-way flow at AM peak hour	680	760	640	510
T - % (AM)	-	10.1	-	-
PM Peak Hour	1800-1900	1800-1900	1700-1800	1600-1700
One-way flow at PM peak hour	850	880	890	780
T - % (PM)	-	4.9	-	-
Prop.of commercial vehicles - 16 hr.	-	8.1	-	-
WEST BOUND				
A.A.D.T.	11850	11730	12110	12120
R 12 / 24 - %	73.7	75.1	70	70.5
R 16 / 24 - %	88.9	89.4	87.8	87.5
AM Peak Hour	0700-0800	0700-0800	0900-1000	0900-1000
One-way flow at AM peak hour	980	1230	690	680
T - % (AM)	-	6.5	-	-
PM Peak Hour	1700-1800	1700-1800	1800-1900	1800-1900
One-way flow at PM peak hour	770	730	870	980
T - % (PM)	-	8.4	-	-
Prop.of commercial vehicles - 16 hr.	-	8.3	-	-

3. OTHER INFORMATION AND COMMENT

Coverage (B) Station 6211
Year 2013

4. Vehicle classification and occupancy - Monday to Friday

Time		Class of vehicle									
		Motor Cycle	Private Car	Taxi	Private LB	PLB	Goods veh.		Non Fr. Bus	Fr. Bus	
							Light	M & H		SD	DD
0700-0800	Pro	1.5	63.4	9.8	0.8	6.2	9.8	3.1	4.1	0.0	1.2
	Ocp	1.0	1.8	1.9	6.7	10.0	1.9	1.4	16.3	0.0	58.9
0800-0900 Peak hour	Pro	2.2	60.4	15.0	0.8	5.0	7.8	1.6	6.4	0.0	0.9
	Ocp	1.1	1.5	1.9	5.5	8.8	2.2	1.3	18.1	0.0	40.4
0900-1000	Pro	0.0	56.4	13.7	1.4	7.9	11.8	3.1	4.5	0.0	1.3
	Ocp	0.0	1.5	1.9	2.8	11.1	1.7	1.2	7.4	0.0	26.3
1000-1100	Pro	0.7	49.1	13.7	2.1	6.5	17.9	5.2	3.4	0.0	1.4
	Ocp	1.0	1.3	1.6	4.5	8.5	1.7	1.4	18.3	0.0	17.3
1100-1200	Pro	1.5	51.2	10.5	2.3	7.9	18.1	3.8	3.8	0.0	1.0
	Ocp	1.0	1.5	2.0	8.3	9.2	1.7	1.1	20.2	0.0	23.6
1200-1300	Pro	1.4	51.0	17.6	2.2	7.2	12.9	2.5	4.0	0.0	1.2
	Ocp	1.0	1.4	1.8	4.2	12.4	1.7	1.3	13.3	0.0	20.6
1300-1400	Pro	1.8	52.8	14.1	1.1	6.5	14.5	3.6	4.3	0.0	1.4
	Ocp	1.0	1.5	2.1	2.0	11.0	1.5	1.6	9.8	0.0	16.7
1400-1500	Pro	1.4	55.6	11.3	1.4	7.4	15.6	3.2	2.5	0.0	1.6
	Ocp	1.0	1.8	1.8	2.3	9.7	1.8	2.0	22.0	0.0	11.9
1500-1600	Pro	1.6	54.9	11.6	2.5	6.0	14.4	3.5	4.4	0.0	1.1
	Ocp	1.0	1.6	1.8	4.3	8.9	1.7	1.1	14.8	0.0	18.6
1600-1700	Pro	1.9	54.7	7.7	2.6	6.4	15.0	6.1	4.5	0.0	1.2
	Ocp	1.0	1.7	2.5	2.8	10.2	1.8	1.2	12.1	0.0	27.0
1700-1800	Pro	2.8	52.0	13.5	2.2	6.4	14.1	3.6	4.4	0.0	1.0
	Ocp	1.0	1.5	1.9	1.9	12.8	2.0	1.5	8.0	0.0	30.0
1800-1900	Pro	1.7	61.3	16.6	0.5	5.7	8.5	2.6	2.6	0.0	0.6
	Ocp	1.0	1.6	2.3	3.0	13.0	1.8	1.1	22.7	0.0	34.8
1900-2000	Pro	1.8	61.9	16.7	0.3	7.1	4.4	2.6	4.2	0.0	1.0
	Ocp	1.1	1.8	2.0	2.0	11.4	1.4	1.2	10.1	0.0	26.1
2000-2100	Pro	1.2	63.3	14.5	0.0	8.3	6.2	2.2	3.4	0.0	1.0
	Ocp	1.0	1.6	1.8	0.0	8.6	1.6	1.0	4.9	0.0	22.5
2100-2200	Pro	3.3	57.6	20.3	0.0	8.7	3.3	1.1	4.7	0.0	1.1
	Ocp	1.3	1.5	2.0	0.0	9.4	1.6	1.3	17.8	0.0	16.2
2200-2300	Pro	3.0	68.3	13.3	0.4	8.1	2.2	0.7	3.0	0.0	1.0
	Ocp	1.3	1.8	2.1	4.0	9.3	1.8	1.0	11.8	0.0	15.5
16 hours	Pro	1.7	57.5	13.8	1.2	6.8	10.8	3.0	4.1	0.0	1.1
	Ocp	1.1	1.6	2.0	3.9	10.3	1.8	1.3	14.1	0.0	26.2

Legend

Pro. Proportion of vehicles in % (Sum may not add up to 100% due to figure rounding)
Ocp. Average occupancy of vehicles
M&H Medium and Heavy